



YOUR GATEWAY TO EXCELLENCE:
STUDYING IN DENMARK

❖ ABOUT DENMARK

- ❖ Denmark is a country in northern Europe. It is made up of the Jutland Peninsula and more than 400 islands in the North Sea. It shares a border with Germany to the south. The country is almost two times the size of Massachusetts.
- ❖ You might have heard that Danes are some of the happiest people on the planet. Maybe the Danish welfare system is one of the reasons why. A cornerstone in the Danish welfare system is free and equal rights to benefits such as healthcare and education. The welfare system aims to ensure economic equality in society and virtually no corruption and low crime rates.
- ❖ Free education for all is a priority in Denmark in order to ensure growth, welfare and competitiveness.
- ❖ A combination of high academic standards and innovative learning approaches prepare students to play an active role in today's globalized world.
- ❖ Danish higher education has a long tradition of cooperation with business, industry and research institutes, creating an relevant environment for the students.

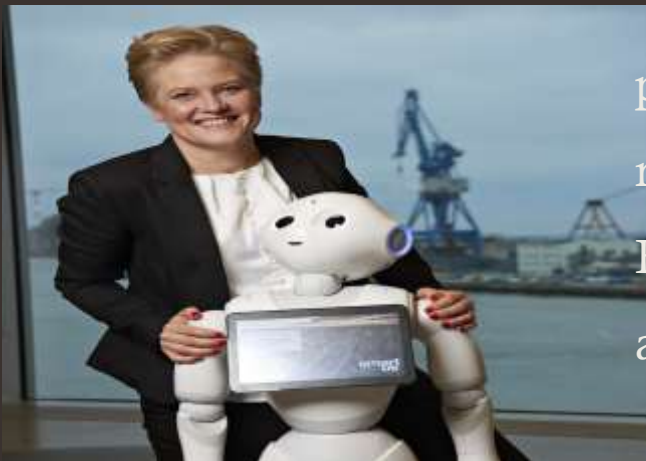
- ❖ Denmark is practically an island nation, as it consist of more than 440 islands (but only about 70 of them are inhabited), and nowhere in Denmark is more than 50 km from the sea. Even the Danish capital, Copenhagen, is situated on an island.
- ❖ Denmark's location makes it a great gateway to other Scandinavian countries and the rest of Europe.
- ❖ Berlin is just an hour's flight away. London and Paris can be reached in less than two hours. And Barcelona, Rome, Vienna and Prague are alle just a few hours travel away.



❖ Why Denmark

- ❖ It has one of the best higher education systems in the world.
- ❖ As well as being home to some of the world's leading universities, education in Denmark offers students several financial benefits that you won't find in many other countries.
- ❖ Denmark is world-leading in tech and sustainable innovation

- ❖ A small(Ish) northern European country with a population of just under six million might not be the first place that comes to mind when you think about the nations leading the world in big tech innovation. However, with its well-educated workforce, significant public and private investment schemes, and a forward-thinking approach to solving the most significant global issues, the Danes are challenging the tech giants in China and Silicon Valley in terms of shaping the future. Denmark is home to pioneers like Per Brinch Hansen, known for his work revolutionary in computer programming, as well Janus Friis, co-creator of Skype, and Google maps founders Jens and Lars Rasmussen.



❖ Highlights of Denmark

- ❖ Bicycle nation
- ❖ Dannebrog is the world's oldest national flag
- ❖ Denmark has one of the oldest monarchies in the world
- ❖ Copenhagen, the capital city is the second happiest city in the world
- ❖ Currency: Danish Krone

❖ Denmark as a best study destination

- ❖ Corruption Free Country
- ❖ Spouse Visa allowed
- ❖ Job opportunities for International students
- ❖ Friendly nature of Danes and the culture similarity with us

Denmark



Dannebrog is the world's oldest national flag



Denmark has been part of the EU since 1973

❖ Spouse and kids in Denmark:-

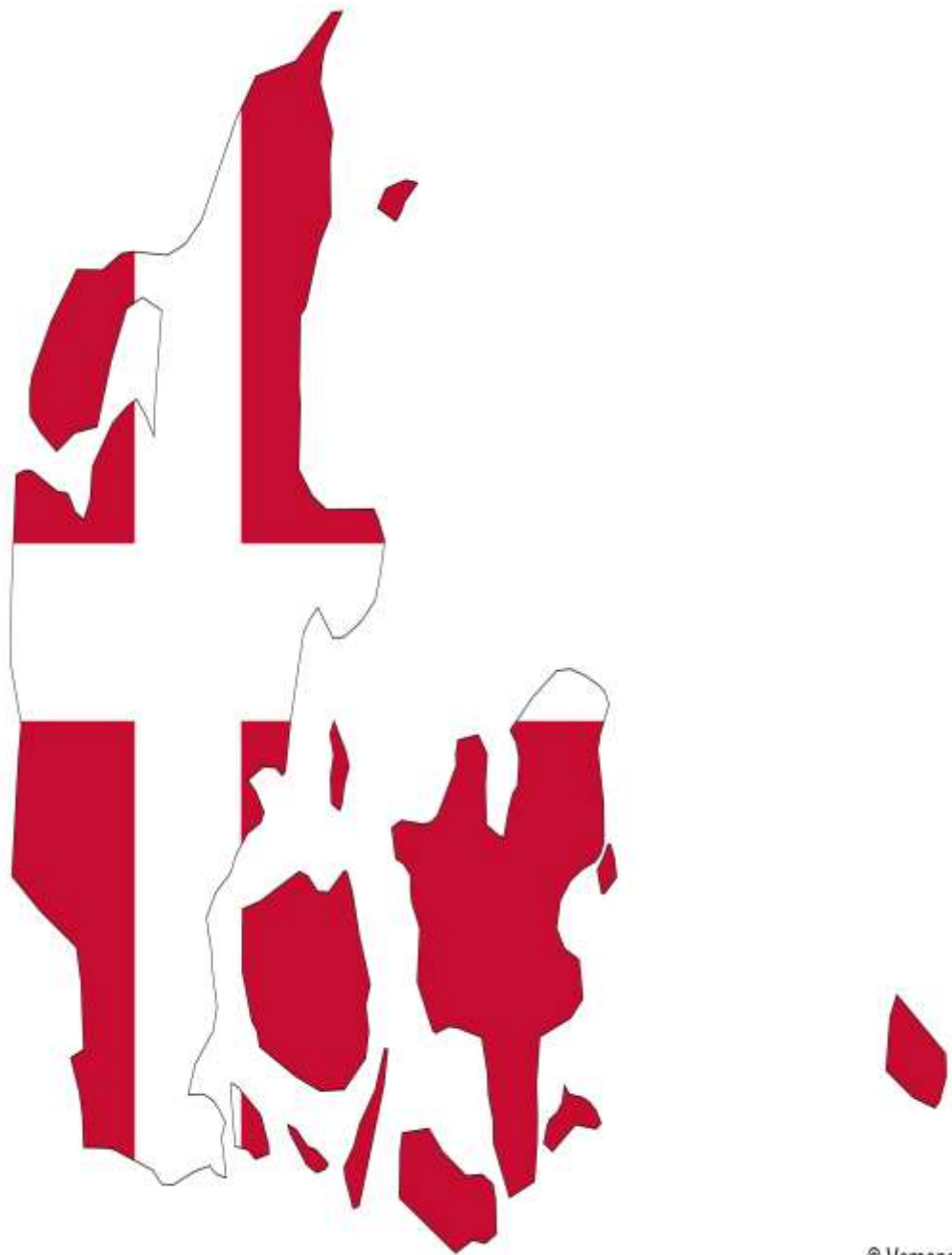
❖ In Denmark, spouse and kids are allowed on study visa. Also, spouse would be having full time work rights which are a fair deal. Students can easily concentrate on their studies while spouse can manage the expenses.

❖ Additional Benefits

❖ Free Education to kids above 5 years

❖ Spouse Full time work rights





© Vemaps.com



© Encyclopædia Britannica, Inc.



- **Neighbouring countries:-** Germany, Norway and Sweden
- **Capital:-** Copenhagen
- **Currency:-** Danish Krone
- **Stay back:-** 6 month (private universities)
3 years (public universities)
Both bachelors and masters
- **Show fund:-** 10 Lakh – 13 Lakh
- **Living Expense:-** 900 – 1500 euro / month
- **Age gap accepted:-** Bachelors 3-4 years,
Masters max 6 years
- **IELTS mandatory (6.5 band)**
- **Working hours :-** 20 hours per week

❖ Eligibility Criteria:-

- ❖ Minimum 65% marks scored in previous education
- ❖ IELTS (above 6 band)

❖ Documents Required:-

- ❖ Resume
- ❖ SOP
- ❖ Photo
- ❖ Passport
- ❖ Leaving Certificate (school / work)
- ❖ Academic Documents
- ❖ Language Proficiency Certificate

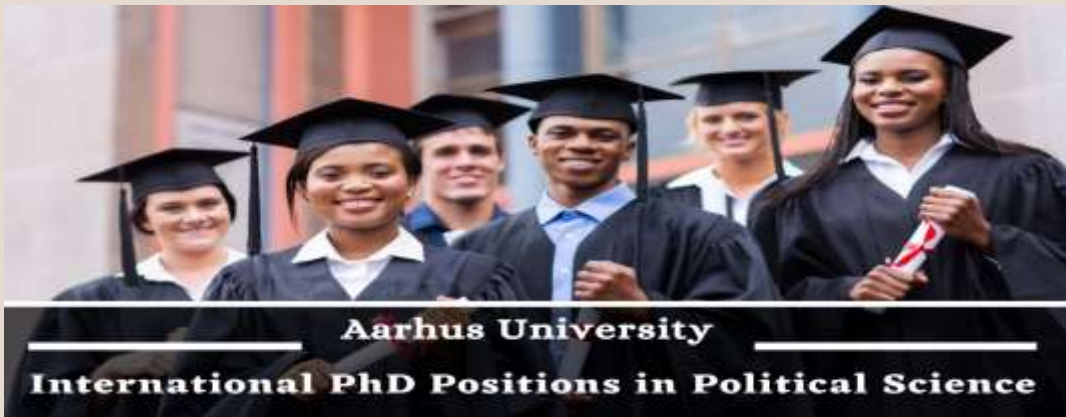


AARHUS
UNIVERSITY

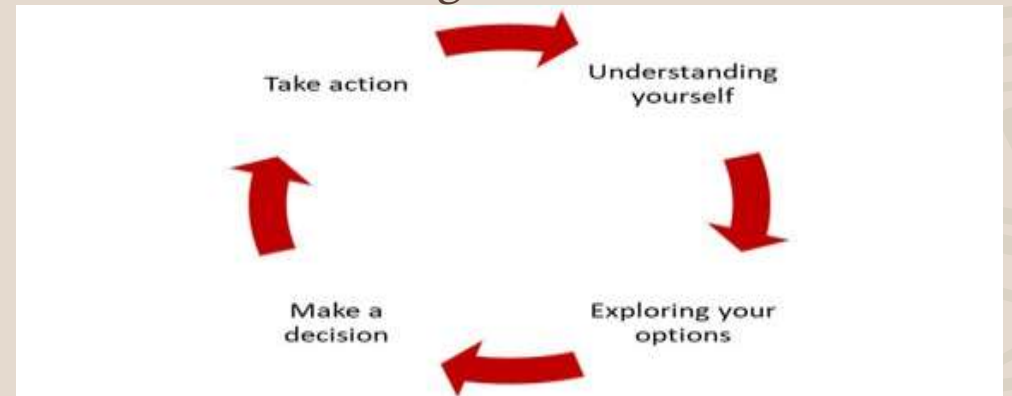


❖ About AU:-

- ❖ Established in 1928, Aarhus University has since developed into a major Danish university with a strong international reputation across the entire research spectrum.
- ❖ Aarhus University offers over 50 English taught courses from a wide range of subject areas at Bachelor's and Master's level, and all our PhD's are English taught. Around 12% of our students are international – from 120 different countries.



- ❖ Aarhus University is a well-established institution, with almost 100 years of history behind it. It has cultivated a reputation as a world-leading research institution, which can be seen through its regular appearance in the top 100 of many rankings. Over the years, AU has evolved into a dynamic and international, institution. Recently, Aarhus University ranked 69th in the Shanghai rankings
- ❖ Active researchers teach classes, and students are encouraged to think critically and engage in open debate. Professors at AU welcome discussions and value student insights to their classes.
- ❖ Many courses are interdisciplinary, giving students a well-rounded perspective of their subject. This can also broaden horizons after graduation.



Bachelor programs offered

Programs	Year	Tuition Fee
Cognitive Science (EN)	3 year	EUR 12,600
Economics and Business Administration, BSc (EN)	3 year	EUR 8500
Economics and Business Administration, BSc (EN) (Herning)	3 year	EUR 8500

Master's Degree Programs offered

Programs	Year	Tuition Fee
Medicinal Chemistry	2 year	EUR 15,300
Agrobiology (Animal Health and Welfare)	2 year	EUR 15,300
Bioinformatics	2 year	EUR 15,300
Business Administration	2 year	EUR 15,300
Chemistry and Biotechnology - Environmental Technology (MSc in Engineering)	2 year	EUR 15,300
Civil and Architectural Engineering (MSc in Engineering)	2 year	EUR 15,300
Cognitive Science	2 year	EUR 15,300
Computer Engineering (MSc in Engineering)	2 year	EUR 12,600
Computer Science	2 year	EUR 15,300
Data Science	2 year	EUR 15,300
Economics and Business Administration - Business Intelligence	2 year	EUR 15,300
Economics and Business Administration - Strategy, Organisation and Leadership	2 year	EUR 10,000



❖ About Neil Brock Business College:-

❖ Niels Brock, Copenhagen Business College, Denmark
Niels Brock, Copenhagen Business College, founded in 1881, is a Denmark-based College offering a diverse and inclusive range of business courses aiming to improve the higher education community and become the most innovative international college in Denmark.

❖ Niels Brock Copenhagen Business College is in the center of Denmark; Copenhagen. With its diverse academic programs, worldwide perspective, and high educational quality, this globally renowned educational institution welcomes students from many nations.

❖ Niels Brock Copenhagen Business School is active in a variety of international operations in Vietnam, China, and the United States, and it has over 1,500 students from countries other than Denmark.

❖ The skills and possibilities are gained as a result of the excellent teaching standards maintained at Niels Brock throughout all educations given to Danish and foreign students. Yet, it is also accomplished through partnership with other colleges.

❖ Niels Brock has a library on campus that is open 24 hours a day, seven days a week. There is a student lounge on campus for studying and group meetings, as well as a fully-stocked Canteen for all of your lunch and snack time demands. The library focuses on commercial course materials.

Programs offered

Program	Total Tuition Fee	Intake
BA (Hons) in Business Management	DKK 276,000	Fall &Spring
Bsc(Hons)in Computer Science	DKK 292,000	Fall &Spring
Bsc(Hons)in Business Studies	DKK 276,000	Fall &Spring

Duration :- 4 years



Copenhagen Business School

HANDELSHØJSKOLEN



❖ About CBS

- ❖ CBS was established in 1917 by the Danish Society for the Advancement of Business Education (now known as FUHU), which is a private educational institution. In 1965 the business school became integrated into the Danish educational system as an institution of higher education
- ❖ Centrally located in Copenhagen, the capital of Denmark, Copenhagen Business School (CBS) is one of the largest business schools in Europe with close to 23,000 students. CBS offers world-class research-based degree programs at undergraduate, graduate, and PhD levels as well as executive and other post experience programs.

- ❖ With the distinctiveness of its diversity, Copenhagen Business School aims to become a world-leading business university with teaching and research excellence in classical management disciplines and in disciplines that place business in a wider social, political and cultural context.



Undergraduates Programs

Programs	Year	Tuition Fee
<u>BSc in Business Administration and Digital Management</u>	3	EURO 12,800
<u>BSc in Business Administration and Service Management</u>	3	EURO 12,800
<u>BSc in Business Administration and Sociology</u>	3	EURO 12,800
<u>BSc in Business, Asian Language and Culture -International Business Asia</u>	4	EURO 12,800
<u>BSc in Business, Language and Culture</u>	3	EURO 12,800
<u>BSc in International Business</u>	3	EURO 12,800
<u>BSc in International Business and Politics</u>	3	EURO 12,800
<u>BSc in International Shipping and Trade</u>	3	EURO 12,800

Graduates Programs

Programs	Year	Tuition Fee/ Euro
MSc in Advanced Economics and Finance	2	16,000 per year
MSc in Business Administration and Bio entrepreneurship	2	16,000 per year
MSc in Business Administration and Data Science	2	16,000 per year
MSc in Business Administration and Information Systems	2	16,000 per year
MSc in Business Administration and Digital Business	2	16,000 per year
MSc in Business Administration and Innovation in Health Care	2	16,000 per year
MSc in Business Administration and Philosophy - last intake in 2025	2	16,000 per year
MSc in Business, Language and Culture - Business and Development Studies	2	16,000 per year
MSc in Business, Language and Culture - Diversity and Change Management	2	16,000 per year
MSc in Economics and Business Administration - Accounting, Strategy and Control	2	16,000 per year
MSc in Economics and Business Administration - Applied Economics and Finance	2	16,000 per year
MSc in Economics and Business Administration - Finance and Investments	2	16,000 per year
MSc in Economics and Business Administration - Finance and Strategic Management (cand.merc.)	2	16,000 per year
MSc in Economics and Business Administration - General Management and Analytics	2	16,000 per year

APPLICATION
FEE
PAYMENT

INTERVIEW

TUITION
FEE
PAYMENT

LETTER
OF
ACCEPTANCE

VISA

❖ VISA CHECKLIST

❖ PHOTO

❖ PASSPORT

❖ ACADEMIC DOCUMENTS (apostle not mandatory)

❖ COVERING LETTER

❖ OFFER LETTER

❖ TRAVEL INSUARENCE

❖ PROOF OF ACCOMODATION

❖ No Bank statement /Proof of Fund needed(1st Sem tuition fee paid candidates)
otherwise -

❖ Original personal bank statement with Candidate's name showing movements in the last three months, not older than 30 days (Must include Full Name, Balance and currency)

THANK YOU