

# LUXEMBOURG



## ABOUT LUXEMBOURG

Luxembourg, landlocked country in northwestern Europe. One of the world's smallest countries, it is bordered by Belgium on the west and north, France on the south, and Germany on the northeast and east.

One of the world's smallest countries, Luxembourg lies in Northwestern Europe and has an impressive standard of living.

Luxembourg ranks 8th out of 149 countries on the World Happiness Report 2021, with the score based on measures including GDP, social support, corruption levels, and personal freedom.

With both seven victories, Ireland and Sweden are the most successful countries in the international song competition. Luxembourg is in shared third place with France, the Netherlands, and the UK, each having five wins on their books.

Crime rates in Luxembourg are impressively low. In 2019, it was even named the safest country in the world for expats. One of the most telling facts about Luxembourg's safety is that the police force has around 2,800 officers working for them, while there are just three jails in the entire Grand Duchy.



## • WHY

- Luxembourg country is famous among international students for its 2 QS ranking universities and lower tuition fees than most Western countries.
- Luxembourg can be a great option for Indian students who are looking to study abroad. Luxembourg offers a high-quality education system, with a range of study programs available to international students. The country also has a high standard of living and a welcoming culture
- Benefits of studying in Luxembourg:-
- Huge Scholarship amount.
- Multicultural and welcoming environment.
- Get a permanent residence permit after 5 years of stay in Luxembourg.
- The University of Luxembourg is the top-ranking university.
- Best universities for business, economics, finance, law, and other disciplines.
- Work in Luxembourg after completing your studies.
- Highest pay scale.
- Settle in Luxembourg after completing the education.
- Best research and technology opportunities.

## LUXEMBOURG

The University of Luxembourg is a world-class research university. It strives for excellence in both fundamental and applied research, and in education. It drives innovation for society, has a high proportion of graduate students, and combines research, teaching and societal impact.

- According to international surveys and rankings, Luxembourg is among the top 20 countries which offer the highest quality of living worldwide. This is not only due to the natural environment and the cosy small-town flair, but also to the safety, to the political and economic stability of the country.



Neighbouring countries:- Belgium, France , Germany and Switzerland

Capital:- Luxembourg is the capital of the small European nation of the same name.

Currency:- Euro

IELTS:- Mandatory (6.5-7.0 band)

Intake % required:- 65-70%

Stay Back:- 9months

Working hours:- 15 hours / week

Age Gap Accepted:- Bachelors 3-4 years and Master 4-5 years

Language proficiency:- Yes



## European institutions



## Services

ALLEN & OVERY



ERNST & YOUNG

Linklaters

PRICEWATERHOUSECOOPERS



Deloitte



## Aerospace sector





UNIVERSITÉ DU

SAVOIR



- The University of Luxembourg was founded in 2003 by combining four existing education and research institutes
- The University has positioned itself as a multilingual, internationally focused research oriented institution, offering students an extraordinary environment. Research and education meet the highest international standards and courses are taught in three languages: English, German and French.
- The University of Luxembourg is still a relatively young university having been founded in 2003. The university is located on different campuses around Luxembourg including Belval Campus, Kirchberg Campus and Limpertsburg Campus.
- The university is well-known for providing multilingual programmes in French, German and English and several master's and doctoral programmes are taught entirely in English.
- There are three faculties: Faculty of Science, Technology and Communication; Faculty of Law, Economics and Finance and Faculty of Language and Literature, Humanities, Arts and Education. There are also three interdisciplinary research centers.
- It is regarded as one of the most international universities in Europe with students coming from about 120 countries from around the world. All undergraduate students are expected to spend a semester abroad and the university collaborates with nearly 90 universities around the world.
- It is also a research-oriented institution currently focusing on research in computational sciences, biomedicine, European law and educational sciences among other areas.



**Bachelors at the Faculty of Science, Technology and  
Medicine**



**Masters at the Faculty of Science, Technology and  
Medicine**



**Bachelors at the Faculty of Law, Economics and  
Finance**



**Masters at the Faculty of Law, Economics and  
Finance**



**Bachelors at the Faculty of Humanities, Education  
and Social Sciences**



**Masters at the Faculty of Humanities, Education and  
Social Sciences**



**Diploma in Specialised Studies in Medicine (DES)**



**Continuing education**



Application Fee: 50 Euro

Tuition fee Range:

Bachelors: 200 Euro – 400 Euro per semester

Masters: 200 Euro to 2000 Euro per semester



LSB

Luxembourg  
School of  
Business

# ABOUT LSB

- Luxembourg School of Business is accredited by the Luxembourg Ministry of Higher Education and Research. The accreditation applies to the entire institution as well as to the Master of Business Administration and the Master of Management programs.
- Luxembourg School of Business was re-accredited via a ministerial decree dated as of 26 of April 2022 for the duration of five years. For more information here is the list of institutions and programs that are officially accredited in Luxembourg.
- Candidates attending LSB Bachelor or Master programs are eligible for student visas and work permit (after finishing their studies).
- As the first and only accredited business school in Luxembourg, it quickly earned its reputation as a hub of high-quality education and global reach, bringing together a world-class faculty to provide exceptional education for tomorrow's business leaders.
- The faculty of LSB consists of executives from multinational organizations, senior leaders from Luxembourg and the region, and others are affiliated with well known academic institutions across the World, combining the Best Academics and Business leaders. This balance of practical and theoretical knowledge delivers relevant learning to our Master's students.
- All the courses are taught in English







# The Jack Welch College of Business & Technology



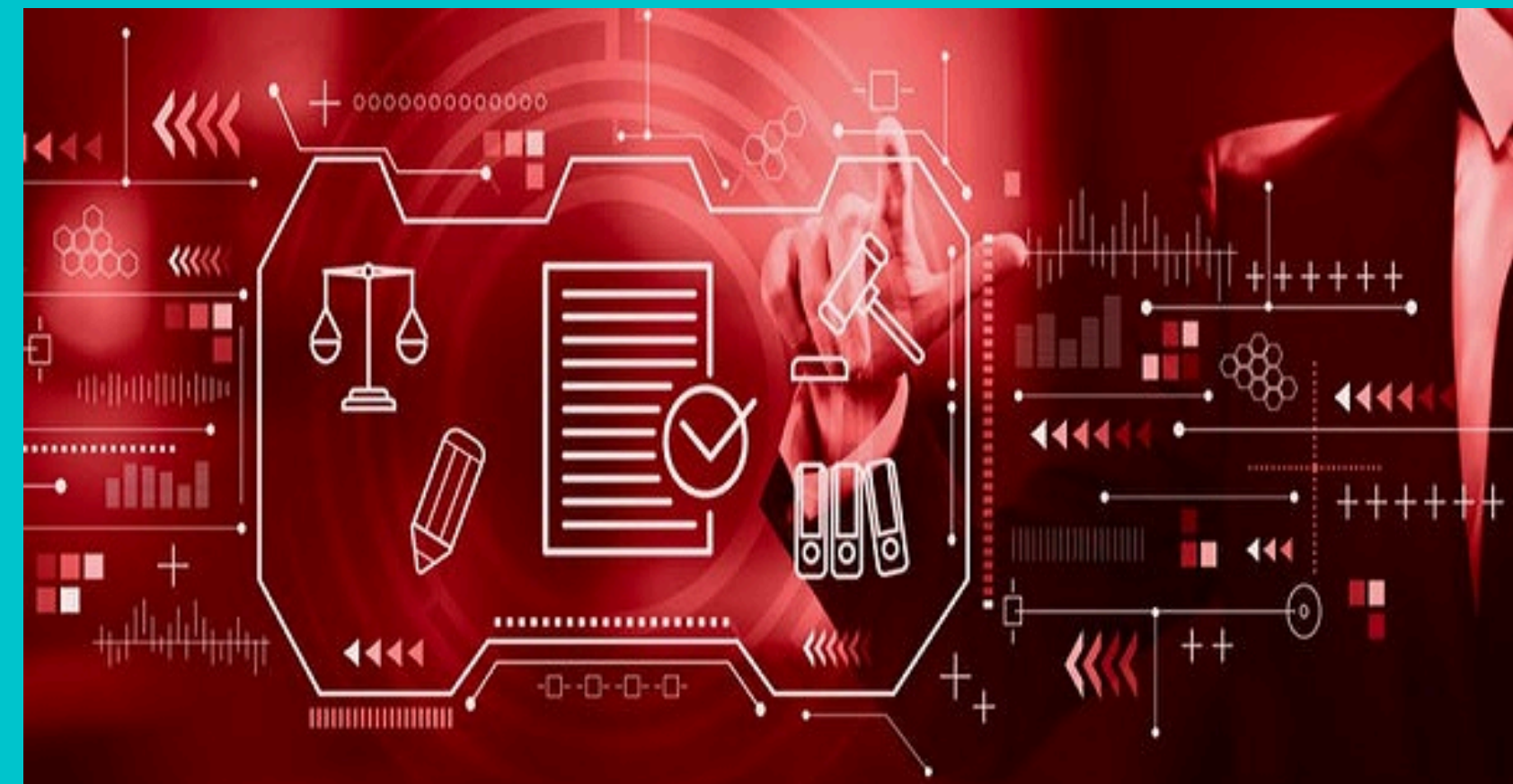
Sacred Heart  
UNIVERSITY

The Jack Welch College of Business at SHU in Luxembourg is the European branch of the main campus in Fairfield, CT (U.S.A.). The Jack Welch College of Business has been in Luxembourg since 1991 offering graduate level programs tailored to the needs of the working individual.

The college offers numerous part-time MBA courses, MBA programmes with an internship, certificate programmes, executive education programmes and open enrolment courses in various areas of management and business like finance, accounting and marketing. It provides education to students from 40 countries across the globe.

The prestigious business school has an extensive network of successful and distinguished alumni worldwide. It provides students with support and assistance to pursue their professional goals. The college has produced several qualified and talented graduates who have successfully made their mark on the business industry

Conveniently situated in the Chamber of Commerce Luxembourg-Kirchberg, the college campus features world-class infrastructure and provides numerous research and online learning tools. It houses a library well-stocked with a number of books, multimedia learning resources and journals. The library can also be used as a study area for students to engage in group study or team projects. The campus is home to numerous spacious classrooms, hi-tech laboratories and peaceful study areas. It also offers several administrative facilities and student support services to students.



## Bachelors Program:-

BS Accounting  
BS Business Economics  
BS Computer Engineering  
BS Computer Science  
BS Cybersecurity  
BS Electrical Engineering  
BS Fashion Marketing & Merchandising  
BS Finance  
BS Game Design & Development  
BS Human Resource Management  
BS Marketing  
BS Sport Management

Application fee: 75 Euro

Tuition fee range:

Bachelor: \$200- \$400 per semester

## Masters Program:-

MBA Business Administration  
MS Business Analytics  
MS Computer Science & Information Technology  
MS Cybersecurity  
MS Finance & Investment Management

Application fee: 7 Euro

Tuition fee range:

Master: \$900- \$1250

```
graph TD; A[APPLICATION FEE] --> B[INTERVIEW]; B --> C[TUITION FEE]; C --> D[VFS];
```

APPLICATION FEE

INTERVIEW

TUITION FEE

VFS

- VFS VISA CHECKLIST:-

- CV
- PHOTO
- PASSPORT
- ACADEMIC DOCUMENTS
- BIRTH CERTIFICATE (Apostle)
- PROOF OF ACCOMODATION
- TRAVEL MEDICAL INSUARENCE
- Authorization to study issued by the Immigration Department of the
- Ministry of Foreign Affairs in Luxembourg is mandatory

**THNAKYOU**